

Great Northern Corridor

Colleen Weatherford

Public Private Partnerships

Port of Vancouver

Vancouver, Washington

June 11, 2013

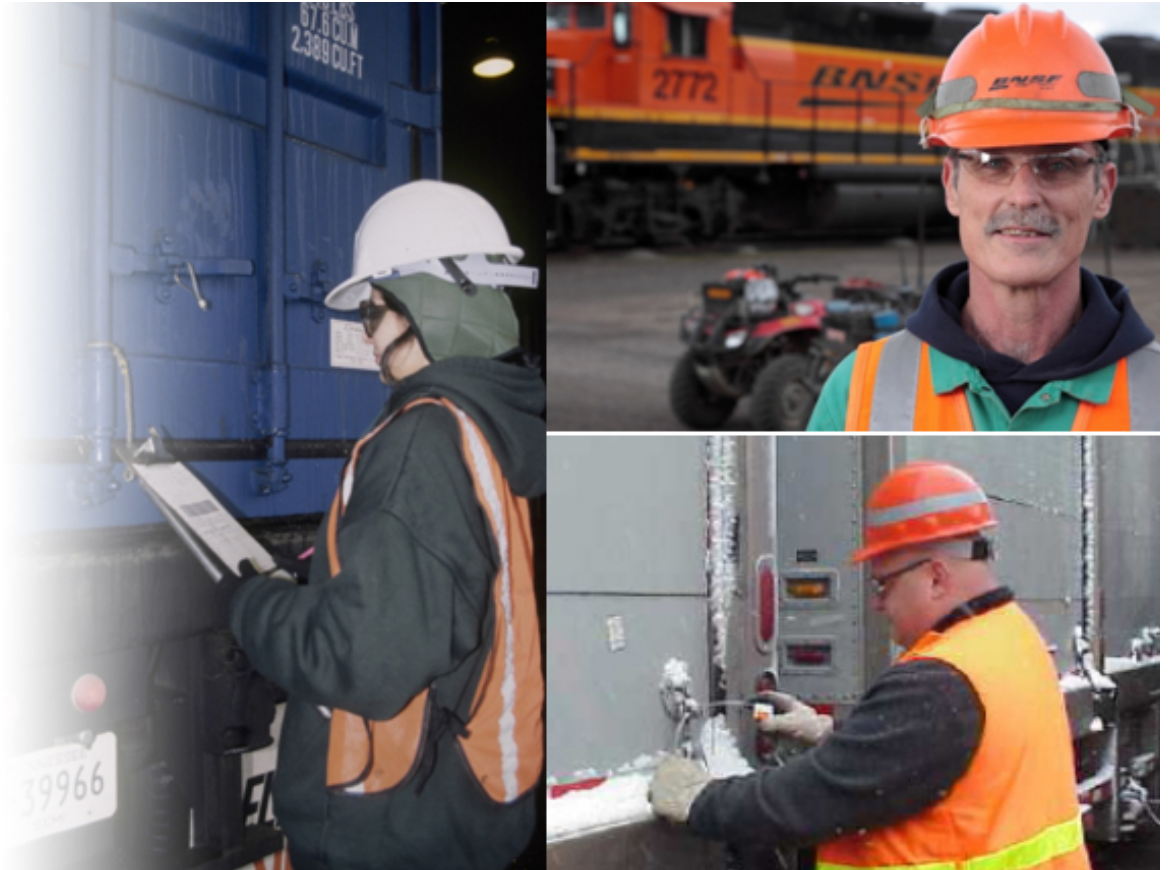
BNSF is a Leading U.S. Railroad

- A Berkshire Hathaway company
- 32,500 route miles in 28 states and two Canadian provinces
- 41,000 employees
- Approximately 7,000 locomotives
- 13,100 bridges and 87 tunnels
- Moves one-fourth of the nation's rail freight
- Operates over 1,400 freight trains per day
- Serves over 40 ports
- Leads rail industry in technological innovation
- Unlike other forms of transportation, BNSF trains operate on an infrastructure financed almost entirely by the railroad



We Focus on Safety

- BNSF's goal is to operate an injury-free and accident-free railroad
- BNSF partners with employees and continually invests in new technologies
- BNSF has helped the industry reduce grade-crossing collision rates by 81%, employee injury rates by 82% and train accident rates by 77% since 1980



About the Great Northern Corridor

