

*Port of Vancouver USA*

*Board of Commissioners Meeting*

MAY 24, 2022



---

# *Community Fund Update*



# Partnerships Build Opportunities

Port of Vancouver Grant of \$3,000  
utilized at Hudson's Bay H.S.



# Building Trades - Hudson's Bay

Mr. Gunderson's students built a shed with industry partners:

- ❑ Port of Vancouver \$3,000 grant
- ❑ Charlie, PK Excavating Inc.
- ❑ 811, NW Gas, and other utilities
- ❑ CalPortland Concrete
- ❑ Sherwin Williams Paint, Vancouver
- ❑ Dean Matthews, GAF
- ❑ Derek Hugel, Wolf Industries
- ❑ Builders FirstSource
- ❑ Jon Girod, Quail Homes
- ❑ Dion Rhodes Painting & Home Solutions





# Port of Vancouver's \$3,000 turned into \$8,000

**Connections  
+  
Expertise  
= PRICELESS**

<b>Port of Vancouver Grant</b>	<b>\$3,000</b>
--------------------------------	----------------

Sherwin Williams	\$750
------------------	-------

PK Excavating	\$1,600
---------------	---------

CalPortland	\$650
-------------	-------

GAF	\$1,500
-----	---------

Builders First Source	\$500
-----------------------	-------

<b>Total Donated Material</b>	<b>\$5,000</b>
-------------------------------	----------------

# 300% Return on Investment

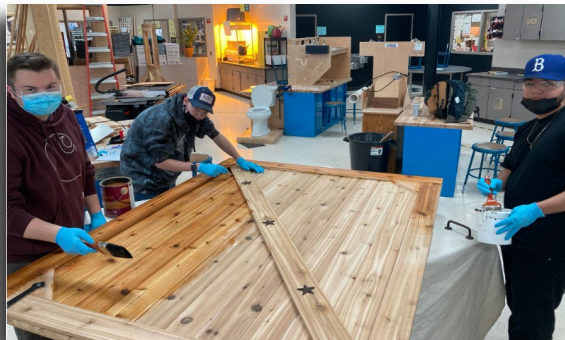
\$3,000 Port of Vancouver set the foundation

\$5,000 Donated supplies and services

\$2,500 Donated time and expertise









# Partnering with Dean Matthews, GAF Roofing Materials







# Partnering with CalPortland Concrete





# Partnering with Dion Rhodes Painting & Home Solutions







**Thank you!**



---

# *Open Forum*

To provide virtual oral comment during the board meeting, you must register no later than 12:00 p.m. Monday, May 23, 2022, by emailing [povcommissioners@portvanusa.com](mailto:povcommissioners@portvanusa.com)



---

# *Public Hearing:*

*Approve Resolution 2-2022 for Designating a  
Tax Increment Area - Action Item E-1*

To provide virtual oral comment during the public hearing, you must register no later than 12:00 p.m. Monday, May 23, 2022, by emailing [povcommissioners@portvanusa.com](mailto:povcommissioners@portvanusa.com)



---

# *Action Items*



---

## *Action Item E-1*

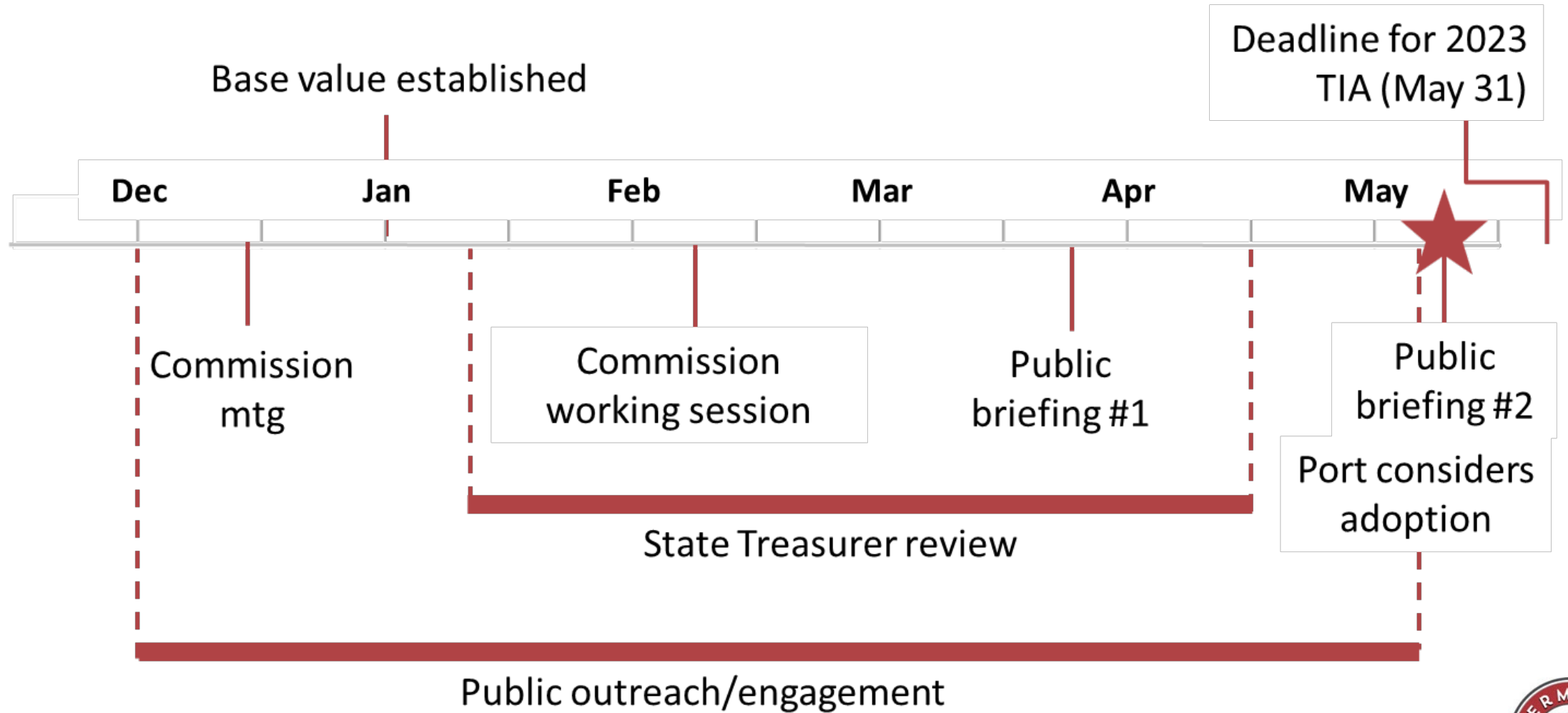
Approve Resolution 2-2022 for Designating a Tax Increment Area



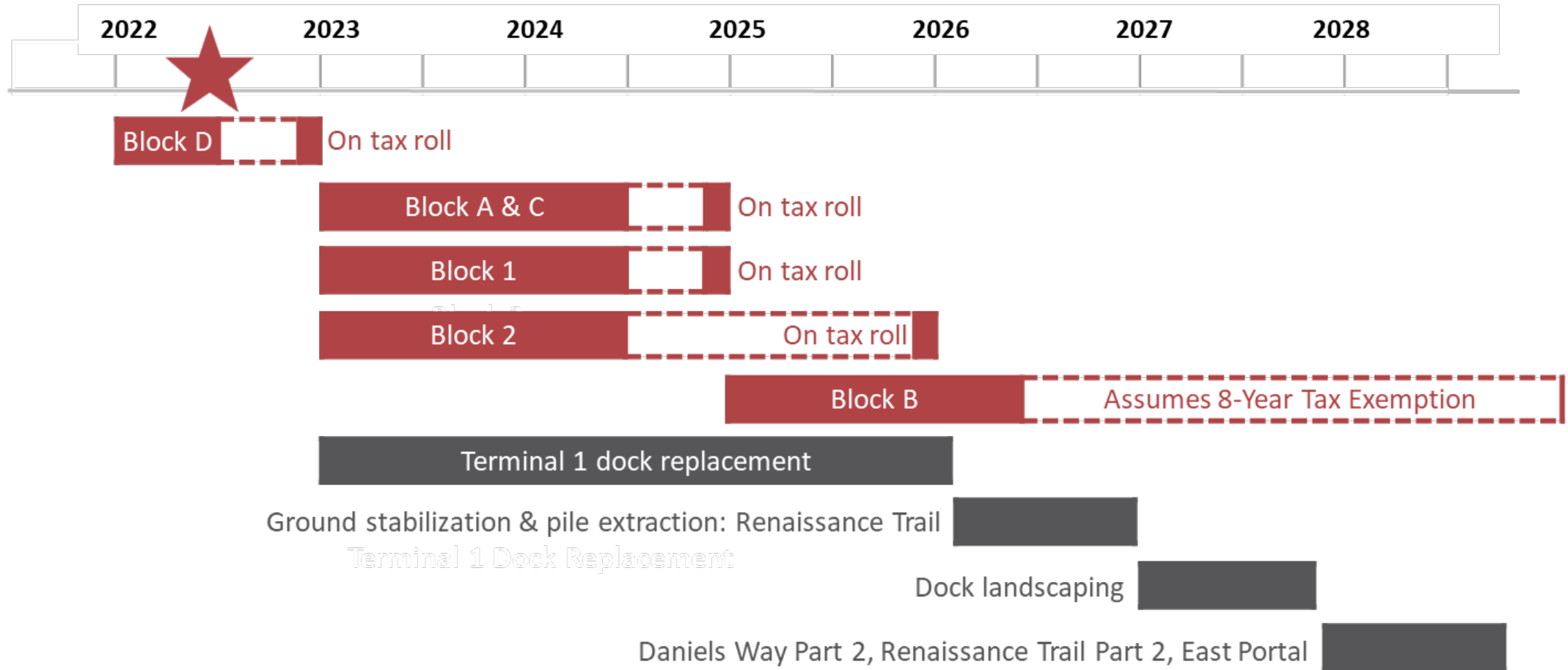
# *Terminal 1 Tax Increment Area*



# *Process to Date*



# Implementation Timeline





---

## *Action Item E-2*

Approve Contracts with KPFF, Mott MacDonald Group, Inc., and Lloyd Engineering, Inc. for On-Call Marine Structural Engineering Consulting Services



---

## *Action Item E-3*

Approve Contracts with Maul Foster and Alongi, Hahn and Associates and Terraphase Engineering for On-Call Environmental Assessment Consulting Services



---

# *Unfinished Business*

PORT CONTRACTS LOGS



---

# *New Business*



---

# *Accounts Payable*



---

# *CEO Report*



---

# *CEO Report I-1*

Action taken under Resolution 2-2020: Declaration of Local Emergency and Delegation of Authority of Emergency Powers





---

# *CEO Report I-2*

## Project Updates



# *Terminal 1 Site & Infrastructure*

CONTRACTOR: JAMES W. FOWLER

- Project substantially complete
- Punchlist in progress





# *Terminal 1 Site & Infrastructure*

CONTRACTOR: JAMES W. FOWLER



- View in 2020





# *Terminal 1 Site & Infrastructure*

CONTRACTOR: JAMES W. FOWLER



- View in 2022





# *Terminal 1 Site & Infrastructure*

CONTRACTOR: JAMES W. FOWLER

- Paving at Quayside Place
- Lighting installed
- Bollards installed



# *Terminal 1 Site & Infrastructure*

CONTRACTOR: JAMES W. FOWLER



- Concrete map feature in progress
- Site interpretive elements complete





# *Terminal 1 Red Lion Demolition*

CONTRACTOR: KEYSTONE CONTRACTING, INC.

- Project 70% complete
- Interior abatement 90% complete





# *Terminal 1 Red Lion Demolition*

CONTRACTOR: KEYSTONE CONTRACTING, INC.

- Red Lion lobby removed
- Red Lion sign removal
- Rooftop HVAC units removed



# *Terminal 1 Red Lion Demolition*

CONTRACTOR: KEYSTONE CONTRACTING, INC.



- Neon letter removal





# *Terminal 1 Red Lion Demolition*

CONTRACTOR: KEYSTONE CONTRACTING, INC.



- Interior walls 80% removed
- Focus on timber beam salvage





# *Terminal 1 Renaissance Trail*

CONTRACTOR: MCDONALD EXCAVATING, INC.

- Project 65% complete
- Federally funded project
- Concrete trail 85% complete
- Landscaping in progress
- Curb work complete





# *Terminal 1 Renaissance Trail*

CONTRACTOR: MCDONALD EXCAVATING, INC.

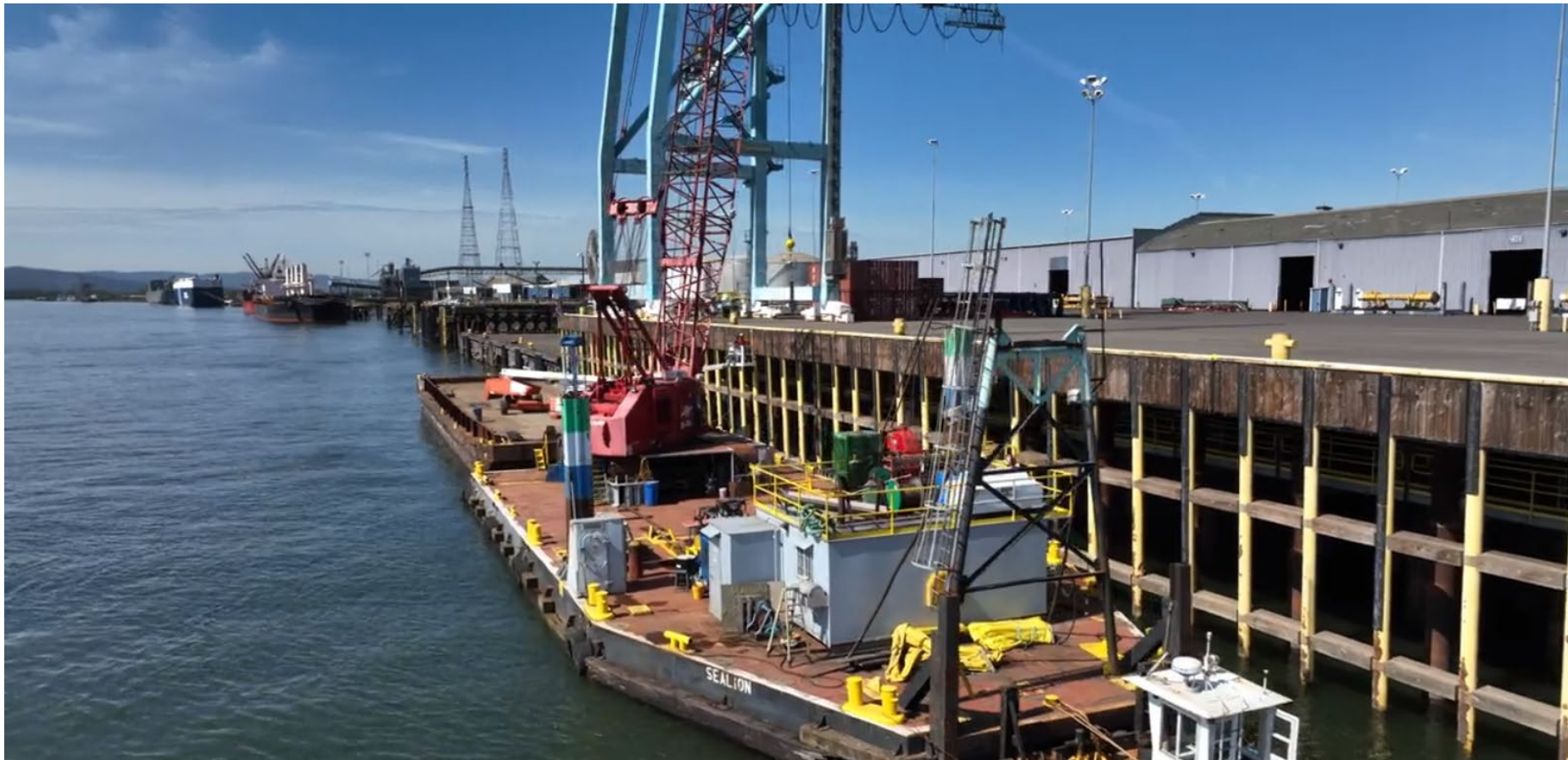


- Stormwater system installed
- Daniels Way concrete placed
- Corten steel installed



# *Berth 2-3 Repairs*

CONTRACTOR: HICKEY MARINE INC.



- Project complete





# *Berth 2-3 Repairs*

CONTRACTOR: HICKEY MARINE INC.



- Fender chain replacement
- Timber chock and waler replacement



# *Berth 2-3 Repairs*

CONTRACTOR: HICKEY MARINE INC.



- 300-400+ ft. UHMW fender panel replacement





# *Berth 17 Dock Fender System Replacement*

CONTRACTOR: NORTHBANK CIVIL & MARINE, INC.

- Waler installation
- Temporary fender cell system installation complete



# *Berth 17 Dock Fender System Replacement*

CONTRACTOR: NORTHBANK CIVIL & MARINE, INC.



- Ladder installation complete
- UHMW-rub rail installation



---

# *CEO Report*



---

# *Commissioners Reports*



---

# *Upcoming Events*

## **Next Commission Meeting**

- Regular Commission Meeting – Tuesday, June 14 - 8:30 a.m.

## **Community Events**

- Junior Market at Vancouver Farmer's Market – Saturday, June 4, 9-3 p.m., Esther Short Park. Home-grown and hand-made items by 200 young entrepreneurs as part of National Lemonade Day.
- Neighborhood Associations of Clark County meeting – 7:00 p.m., Monday, June 13
- A few openings available for August and September port tours. Sign-up information available on port's website ([www.portvanusa.com](http://www.portvanusa.com)) under "community" tab; or call 360-693-3611.





---

# *Communicating with the Commission*

- Share your thoughts during Open Forum, the public comment period for all regularly scheduled commission meetings.
- Email the commissioners at [povcommissioners@portvanusa.com](mailto:povcommissioners@portvanusa.com)
- Speak to the commissioners by calling the port office at 360-693-3611 for specific contact information.
- Mail your comments to:  
POV Board of Commissioners  
3103 NW Lower River Road, Vancouver, WA 98660
- For more information, visit the port's website: [www.portvanusa.com](http://www.portvanusa.com)



# *Port of Vancouver USA*

3103 NW Lower River Road

Vancouver, WA 98660

[info@portvanusa.com](mailto:info@portvanusa.com)

360-693-3611



# *Workshop*

## COLUMBIA RIVER CHANNEL UPDATE





# Overview

- What is the Columbia River Channel?
- Why is it important?
- What is the Port's role in channel maintenance?
- Current activities on the Channel





## Lower Columbia River Federal Navigation Channel



- **Created by the River and Harbors Act (1878)**
- **105 mile stretch from Astoria to Vancouver**
- **Maintained by the Army Corps of Engineers**
- **Depth started at 20 feet (300 feet wide)**
- **Channel grew over time as ship size increased**
- **Last deepening went to 43 feet (2010)**
- **Channel is 600 feet wide**

PACIFIC OCEAN



0 5 10 20 30 Miles





An aerial photograph of a large body of water, likely a river or estuary. A long, straight pier or breakwater extends from the left bank into the water. In the foreground, there is a large, irregularly shaped area of land that appears to be a dredged or reclaimed area, with a mix of green vegetation and bare earth. The background shows a forested hillside and some buildings.

## *Why is the Channel Important?*

- Provides a regionally significant trade route to Pacific Rim, European and South American markets
- Helps to create jobs and economic prosperity in the region
- Maintaining depth provides trade certainty
- Generated over \$1 billion in investment since 2010
- US Marine Highway M-84 Designation in 2010





# *Role of the Port*

POV is a non-federal sponsor of the Columbia River Channel 2010 Deepening

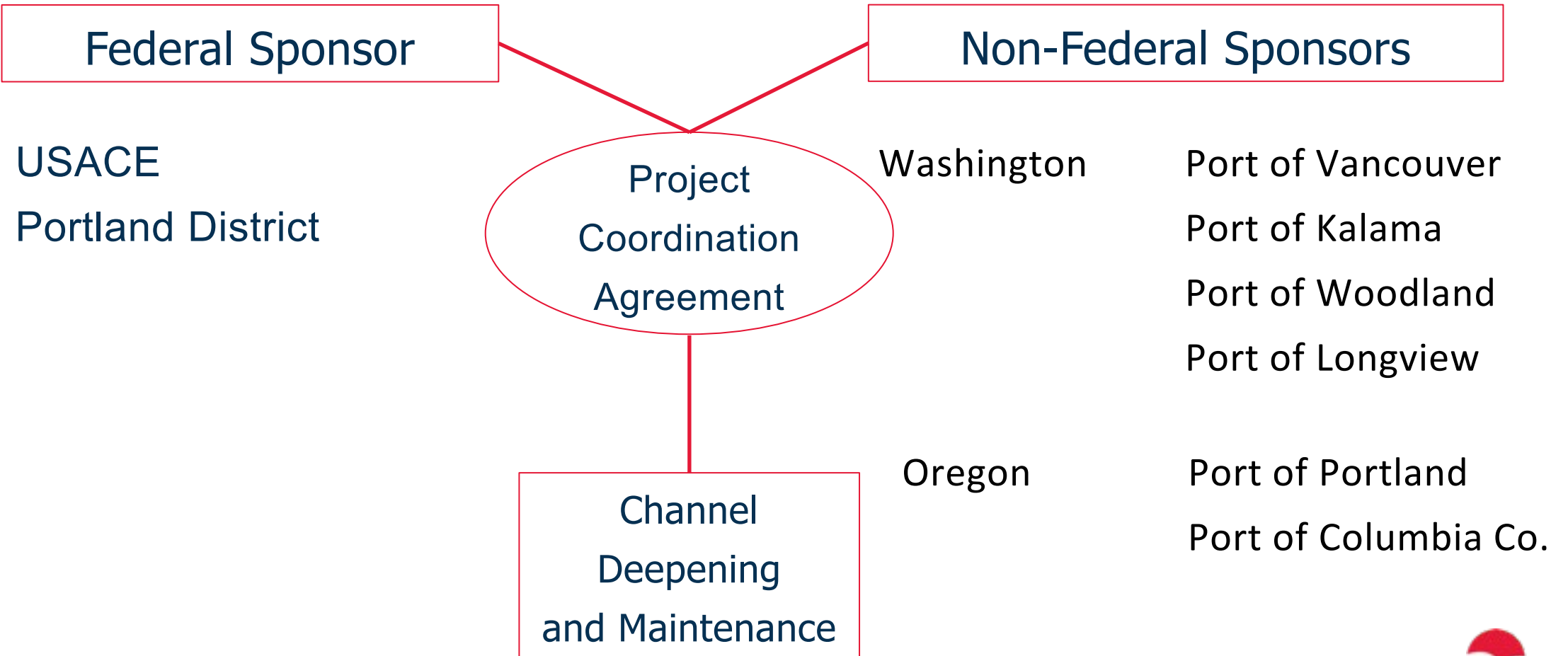
## Ongoing O&M

- Permitting/SEPA
- Property Acquisition
- Property Management
- LCR-CMP
- Contracting
- Public Outreach

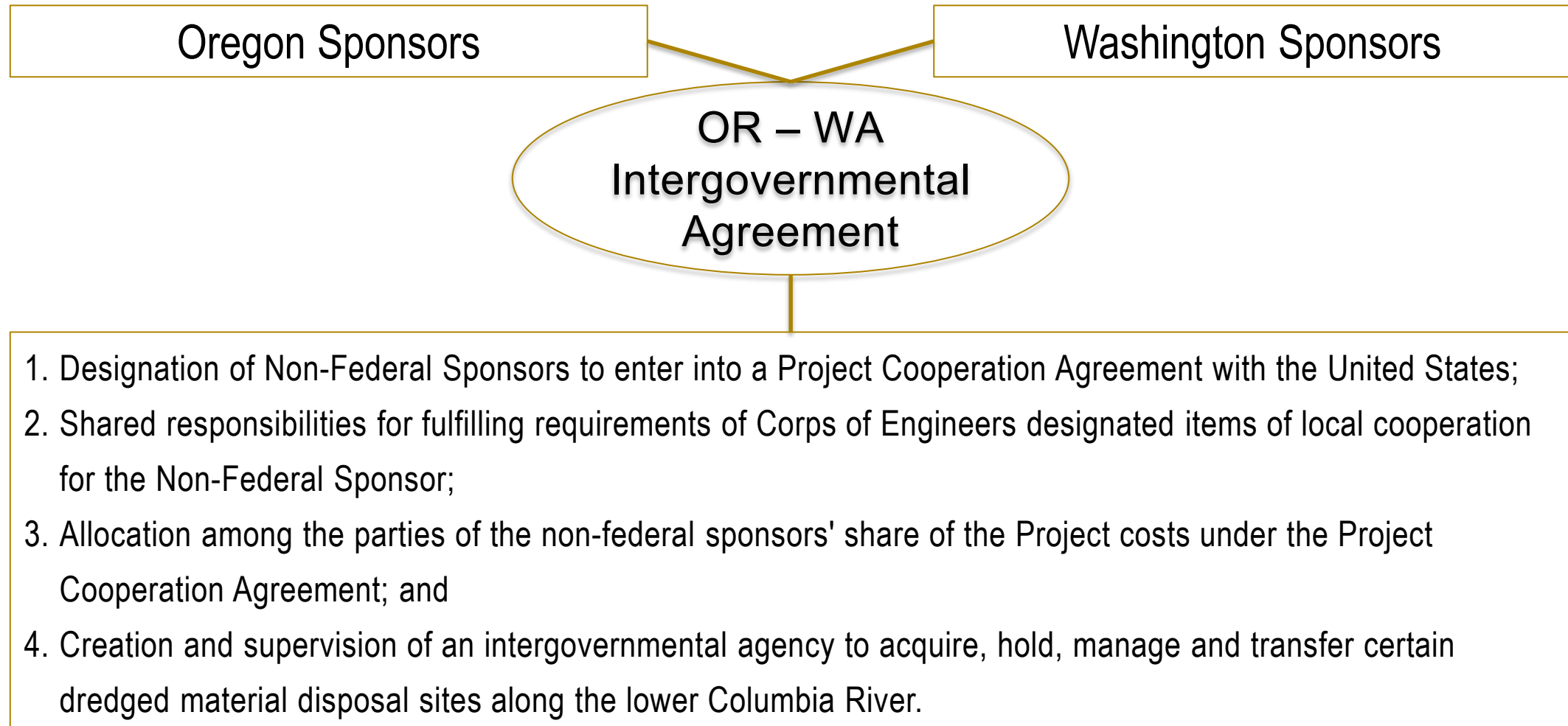


# *Columbia River Channel Project*

## Project Coordination Agreement

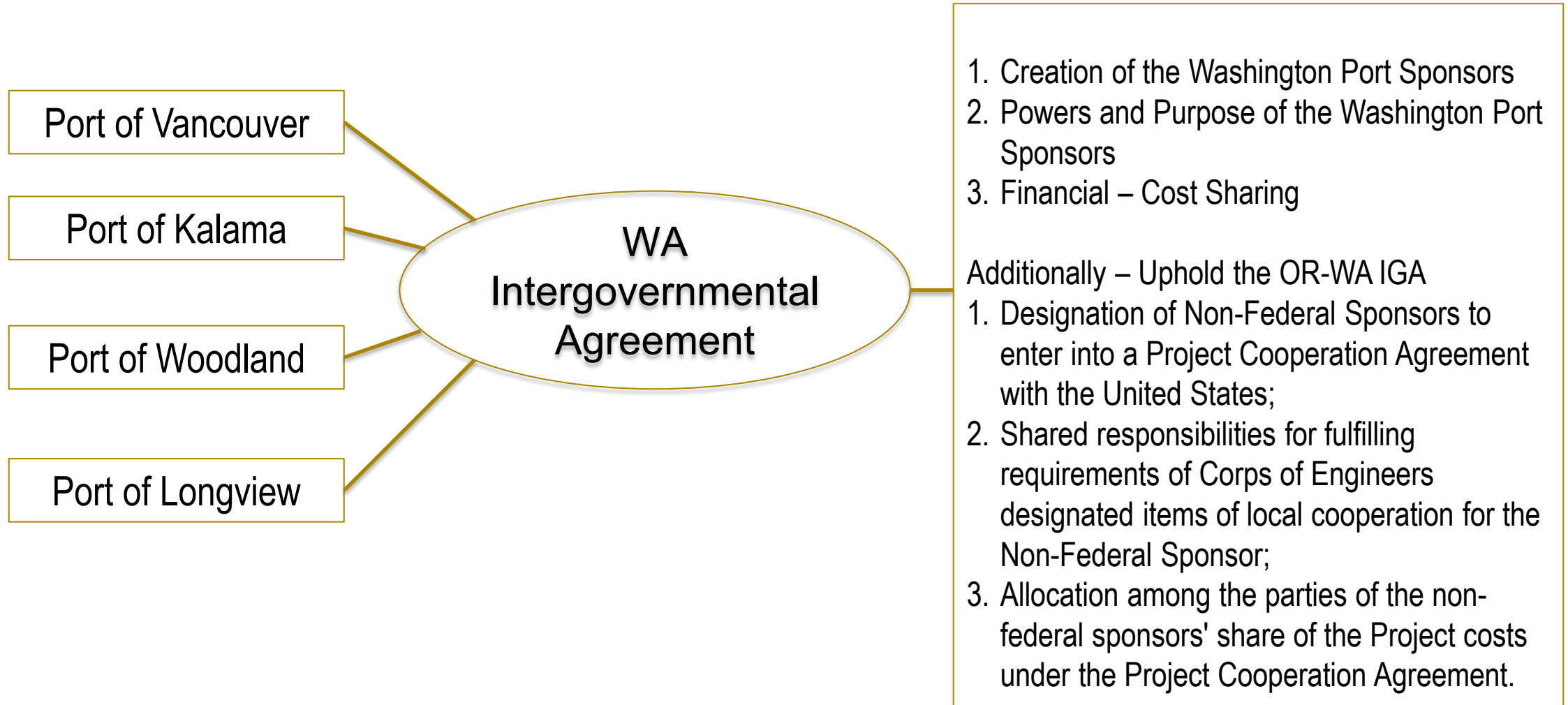


# *Working Agreements – Oregon & Washington*



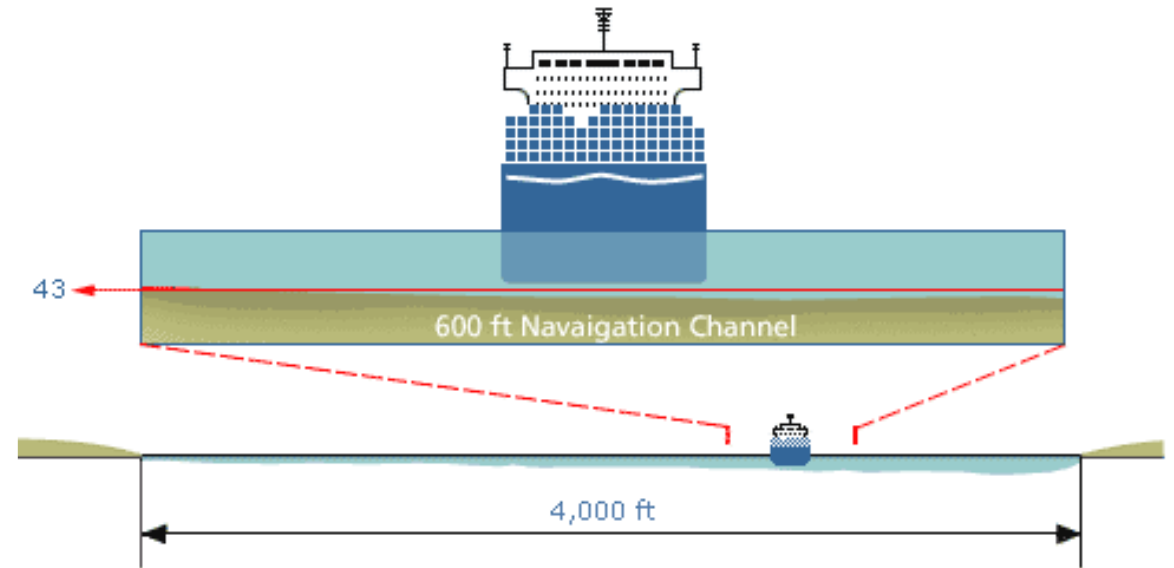


# *Working Agreements – Washington Ports*



# *Non-Governmental Partners*

- Pacific Northwest Waterways Association
- Washington Public Ports Association
- Columbia River Steamship Operators Association



# *Current Activities – O&M*

- Performed by USACE
- Multiple Dredges Used
  - Hopper
  - Pipeline
  - Clamshell
- Remove 6 to 9 million cubic yards per year
- Dredge spoils placed in water, upland or on beaches
- Spoils used to improve habitat for salmon, birds
- Pile dikes direct channel
- Jetties protect mouth of river





---

## *Current Activities – LCR-CMP*

- Beginning year 12 of maintenance following channel deepening
- 14 of 20 placement sites are full or near capacity
- Washington Ports jointly own 6 of the 19 upland placement sites
- After a significant delay USACE and Sponsor Ports have started an Environmental Impact Study (EIS) (NEPA/SEPA) to identify placement over the next 20 years.
- Once complete, upland sites will need to be purchased on both sides of the river.
- USACE will augment with in-water and beach nourishment sites.



*Thank You*

