

Port of Vancouver USA

Board of Commissioners Virtual Meeting

SEPTEMBER 22, 2020



Open Forum

To provide public comment during the virtual board meeting, you must register no later than 8:30 a.m. Monday, September 21, 2020 by emailing povcommissioners@portvanusa.com * *



Action Item E-1

Approve Resolution 4-2020 for the Issuance and Sale of Limited Tax General Obligation Refunding Bonds



Action Item E-2

Approve Leases for Terminal One, Lot 1
and Lot 2 to Columbia Waterfront, LLC



SALES DEPARTMENT LEASE PROCESS

Staff reviews business opportunity including deal points, finances and site evaluation

Leadership review and approval of business opportunity

Lease deal points negotiation with tenant

Staff prepares draft lease documents

Lease document negotiation

Tenant signs final lease documents

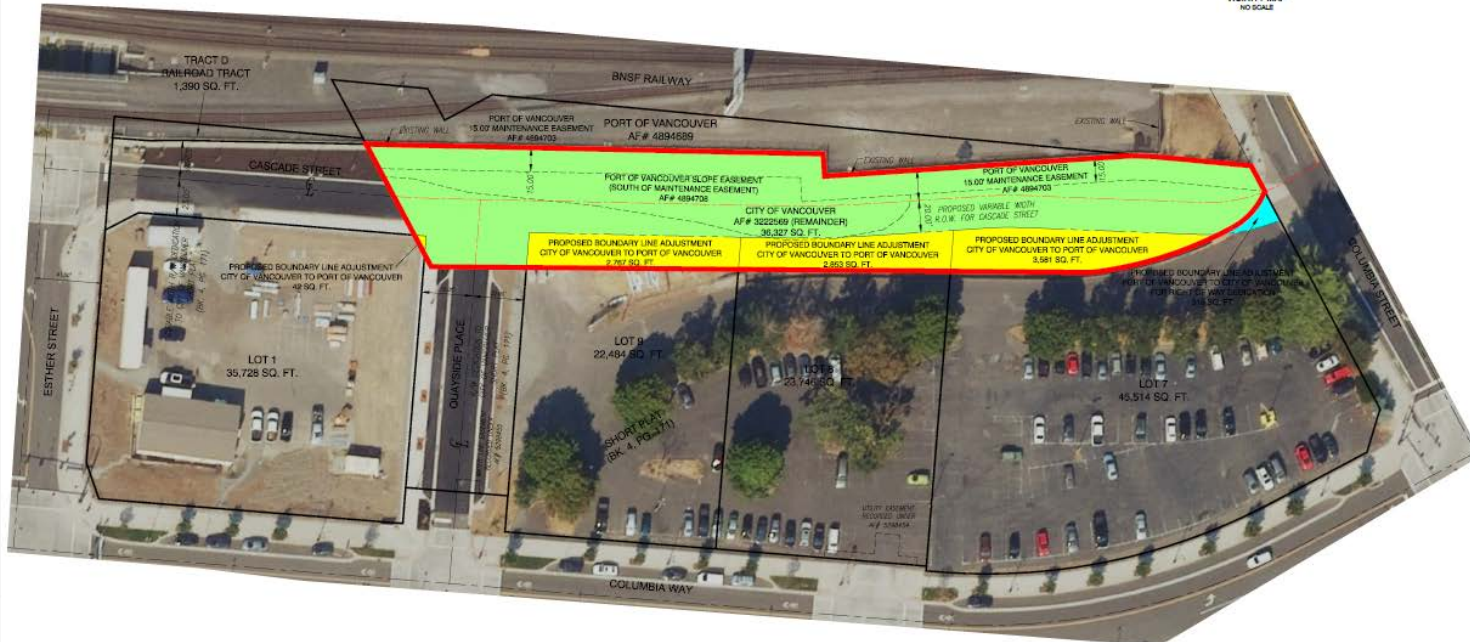
Final approval and signatures

Implement lease changes, tracking, accounting and files





- CITY OF VANCOUVER REMAINDER (RIGHT OF WAY)
- PROPOSED PORT OF VANCOUVER ACQUISITION
- PROPOSED PORT OF VANCOUVER DEDICATION-POST ADJUSTMENT



CLIENT:
PORT OF VANCOUVER
8100 LOWER RIVER ROAD
VANCOUVER, WA 98080

PROJECT:
**PORT OF VANCOUVER TERMINAL 1 EXHIBIT FOR:
CITY OF VANCOUVER SURPLUS PROPERTY**
IN THE SW 1/4 SECTION 27 AND THE SE 1/4 OF SECTION 28, T8N, R1E, W1M.

DRAWN BY:
OLSON ENGINEERS
LAND SURVEYORS
ENGINEERS
3416 18TH AVE. S.E.
VANCOUVER, WA 98080

DATE: 06/15/2019
SCALE: 1" = 30'

CHECKED BY: [Blank]
DATE: [Blank]
SCALE: [Blank]

JOB NO. 8019.00.05

SHEET

1 of 1

FILE: J:\AA\JRS\061819\061819_SURVEY\019-71-Redesign\061819-019_SURVEY-119.dwg



Action Item E-3

Approve Third Amendment to Lease
Between the Port of Vancouver USA and
Choose Fun, Inc., d/b/a Warehouse '23





Warehouse 23 at Terminal 1



188.0 0 94.00 188.0Feet

WGS_1984_Web_Mercator_Auxiliary_Sphere
Clark County, WA. GIS - <http://gis.clark.wa.gov>

This map was generated by Clark County's "MapsOnline" website. Clark County does not warrant the accuracy, reliability or timeliness of any information on this map, and shall not be held liable for losses caused by using this information.



Legend

Notes:



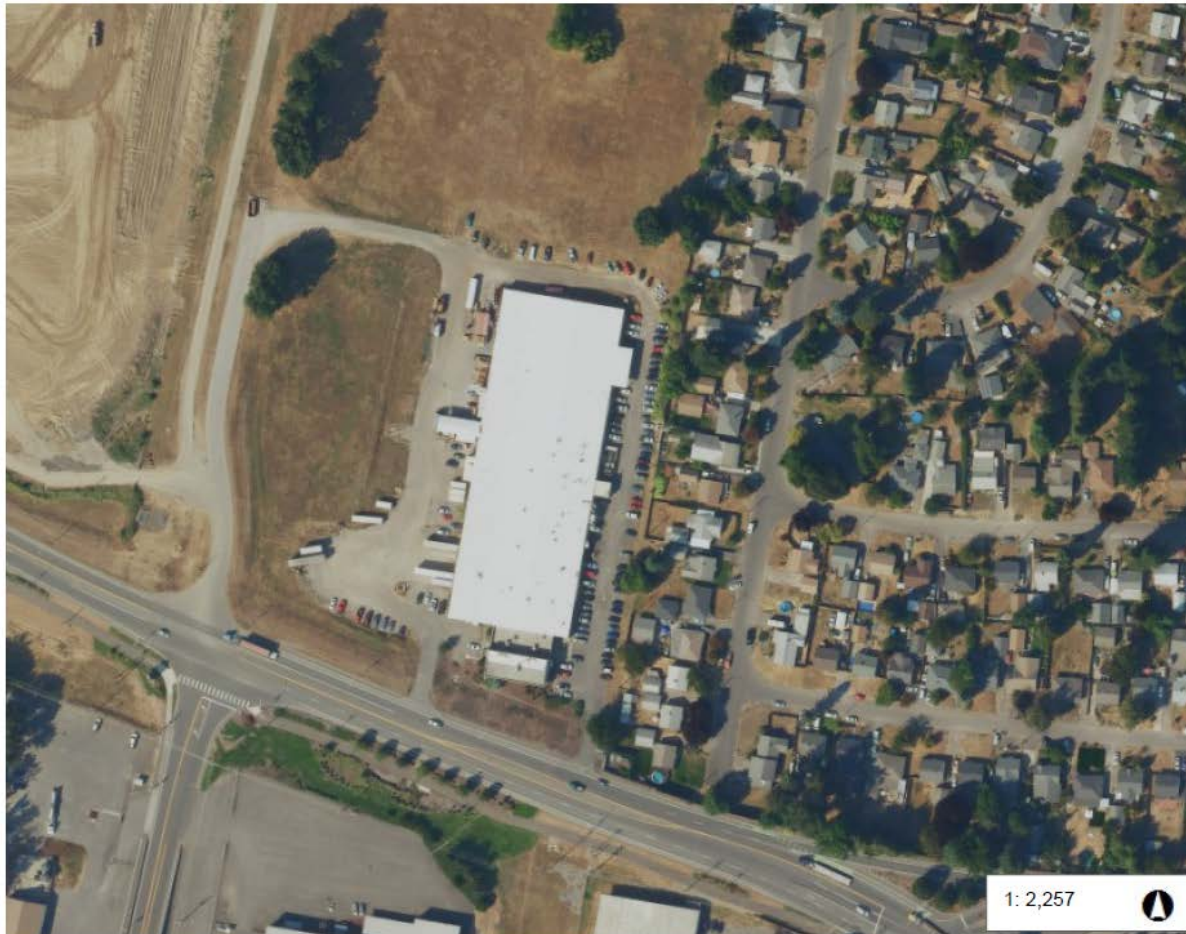
Action Item E-4

Approve Third Amendment to Lease
Between the Port of Vancouver USA and
Glen Dimplex Americas Company (formerly
Cadet Manufacturing Company)





Glen Dimplex America



Legend

Notes:

1: 2,257



376.2 0 188.08 376.2 Feet

WGS_1984_Web_Mercator_Auxiliary_Sphere
Clark County, WA. GIS - <http://gis.clark.wa.gov>

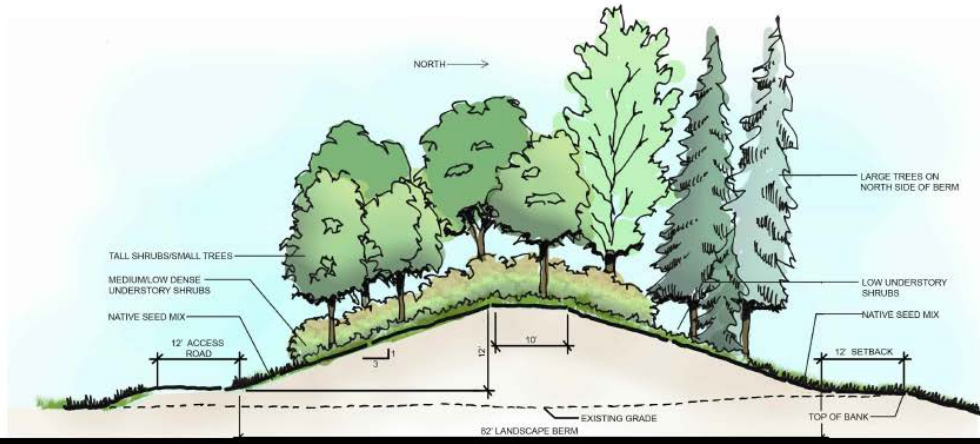
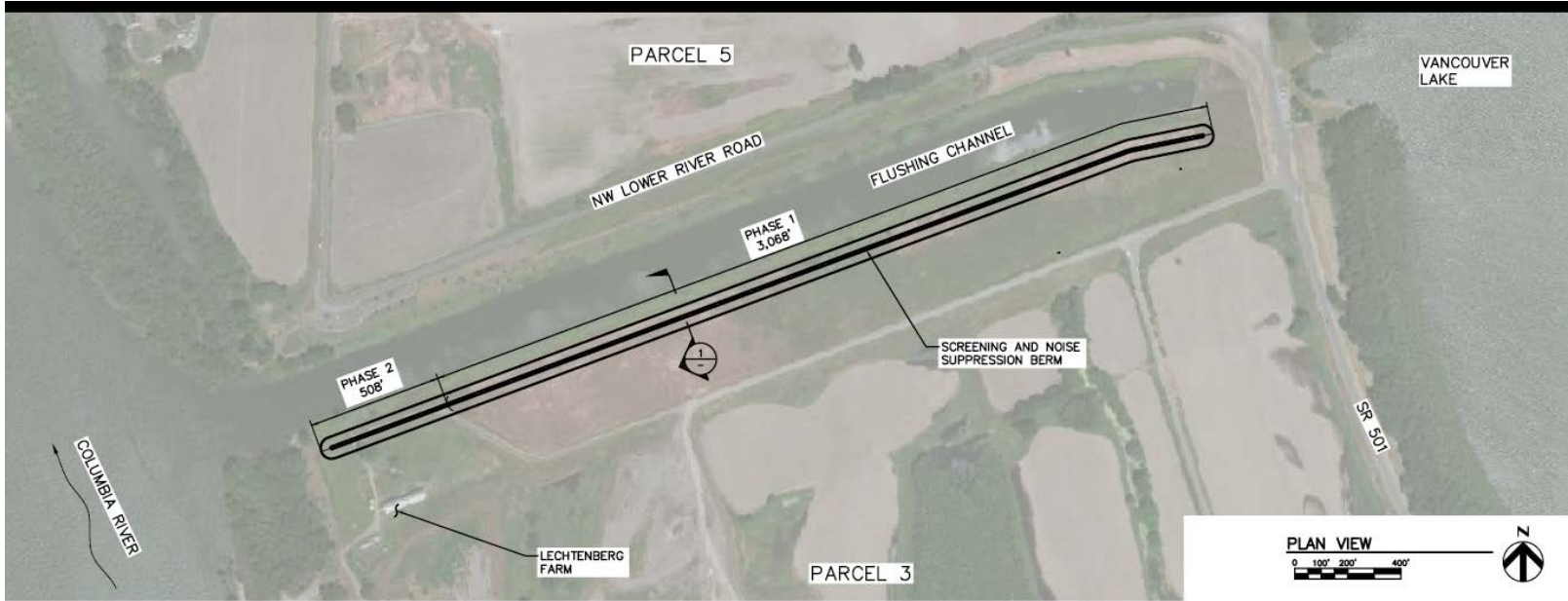
This map was generated by Clark County's "MapsOnline" website. Clark County does not warrant the accuracy, reliability or timeliness of any information on this map, and shall not be held liable for losses caused by using this information.



Action Item E-5

Approve Public Works Contract for Bid 20-32:
Parcel 3 Berm Landscape Project





Unfinished Business

PORT CONTRACTS LOGS



New Business



Accounts Payable



CEO Report



CEO Report I-1

Action taken under Resolution 2-2020:
Declaration of Local Emergency and
Delegation of Authority of Emergency
Powers



Commissioners Reports



Communicating with the Commission

- Share your thoughts during Open Forum, the public comment period for all regularly scheduled commission meetings.
- Email the commissioners at povcommissioners@portvanusa.com
- Speak to the commissioners by calling the port office at 360-693-3611 for specific contact information.
- Mail your comments to:
POV Board of Commissioners
3103 NW Lower River Road, Vancouver, WA 98660
- For more information, visit the port's website:
www.portvanusa.com



Port of Vancouver USA

3103 NW Lower River Road

Vancouver, WA 98660

info@portvanusa.com

360-693-3611

