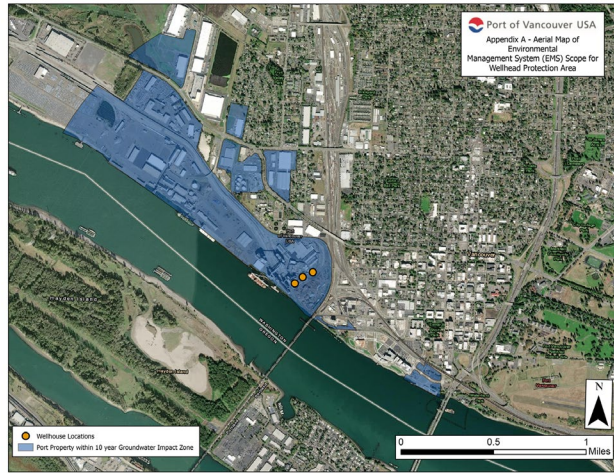


## **Environmental Management System: Port of Vancouver USA Wellhead Protection Area**

### **What is an EMS and why does the port have one?**

As defined by the [Environmental Protection Agency](#) (EPA), an Environmental Management System (EMS) is a framework that helps an organization achieve its environmental goals through consistent review, evaluation and improvement of its environmental performance.

The Port of Vancouver USA owns and maintains its own water system which provides clean drinking water for industrial tenants and marine vessels, as well as irrigation and fire protection. The water comes from three port-owned wells in the Troutdale Aquifer, and with these wellheads being located near an active industrial area, the port utilizes an EMS to proactively protect this water supply through targeted programs and activities in the wellhead protection area.



*The Port of Vancouver's wellhead protection area is its fence line (highlighted area). The scope of the EMS includes activities and operations within this fence line.*

### **How does the port use the EMS?**

Designed to address water quality, water supply, pollution prevention and system integrity, the EMS is used to manage and protect the wellhead protection area. By bringing together a cross-departmental EMS core team who evaluates its operations and sets goals, the port is able to identify opportunities to help further ensure that potential risks to the wellheads are proactively and properly managed.

### **What is ISO and how does it relate to the port's EMS?**

The [International Organization for Standardization](#) (ISO) is an independent, non-governmental international organization with a membership of 165 [national standards bodies](#). As described on their [website](#), ISO brings together experts to share knowledge and develop voluntary, consensus-based, market relevant International Standards that support innovation and provide solutions to global challenges.

[ISO 14001:2015](#) is the official international standard for an EMS. It is based on the Plan-Do-Check-Act methodology, which encourages continual improvement. The port follows ISO 14001:2015 standards and the continual improvement process for its Wellhead Protection Area EMS.

**What is the goal of the port's EMS?**

The goal of the port's EMS is to maintain a high level of oversight, maintenance and operation of the port's water system to ensure that the port can provide its tenants and customers with safe clean drinking water. Read the port's [EMS policy](#) and learn more in [Fieldwork with Phil: EMS](#).

For more information about the port's water quality efforts, visit <https://www.portvanusa.com/environmental-services/water-quality/>.